



Sujal Enterprise

Sujal Enterprise are a leading **Manufacturer** of a wide range of **Threaded Stud, CNC Turret Sleeve, SS Drawer Kadi**, and many more.



About Us

Established as a **Proprietor** firm in the year **2014** we “**Sujal Enterprise**” are a leading **Manufacturer** of a wide range of **Threaded Stud, CNC Turret Sleeve, SS Drawer Kadi**, and many more. Situated in **Rajkot (Gujarat, India)**, we have constructed a wide and well functional infrastructural unit that plays an important role in the growth of our company. We offer these products at reasonable rates and deliver these within the promised time-frame.

Under the headship of “**Mr. Atul Kumar Haribhai Sangani**”, we have gained a huge clientele across the nation.

For more information, please visit



CNC JAW



Mild Steel CNC Jaw



Industrial Hard Cnc Jaw



V Shaped CNC Jaw



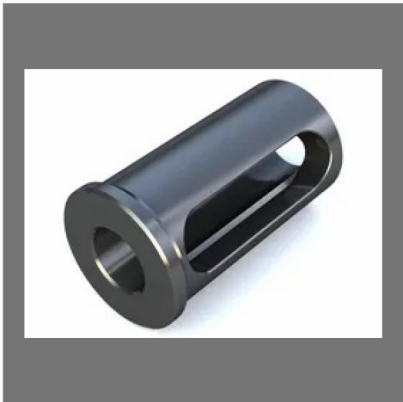
Soft Cnc Jaws

CNC TURRET SLEEVE

Our Product Range



20mm CNC Turret Sleeve



Turret Sleeves For Cnc Machines



Turret Sleeves For Cnc Machines



Turret Sleeves For Cnc Machines

SS DRAWER KADI

Our Product Range



Drawer Kadi



Ss Drawer Kadi



S - 605. Round kadi

SS Round Drawer Kadi



S - 604. Three Line Kadi

SS Three Line Drawer Kadi

CNC MACHINED NUT



Cnc Machine T Nuts



Cnc Machine T Nuts



Ms T Nut



L Shape Cnc Jaws



L Type Cnc Jaw



L Shape Cnc Jaws

OTHER PRODUCTS:



Mild Steel CNC Soft Jaw



Stainless Steel Drawer Kadi



Cnc Vmc T Nut



T Nuts For Cnc Chuck

OTHER PRODUCTS:



Universal Step Clamp



Strap Clamp Forged Body



12 mm vmc clamping kit



T Slot Clamping Kit

OTHER PRODUCTS:



Cnc Lathe Turret Boring
Sleeve



Cnc Lathe Turret Boring
Sleeve



Soft Cnc Jaws



L Shape Cnc Jaws

OTHER PRODUCTS:



Ms Half Threaded Studs



Mild Steel Half Threaded Stud



12mm MS Expansion Nut

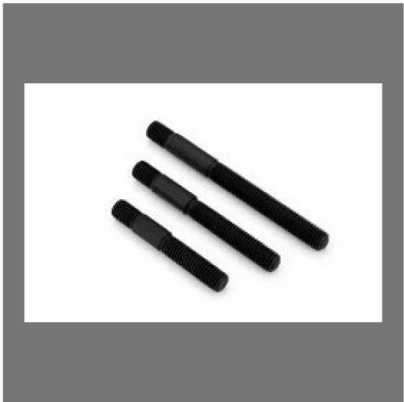


Ms Flanges Hex Nuts

OTHER PRODUCTS:



MS Half Threaded Stud



Ms Half Threaded Studs

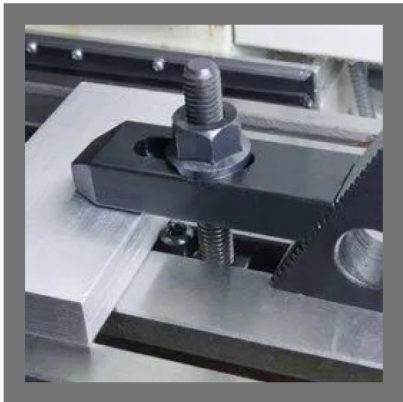


Soft CNC Jaws



Mild Steel Half Threaded Stud

OTHER PRODUCTS:



Universal Step Clamp



Extension Nuts



CNC IDOL

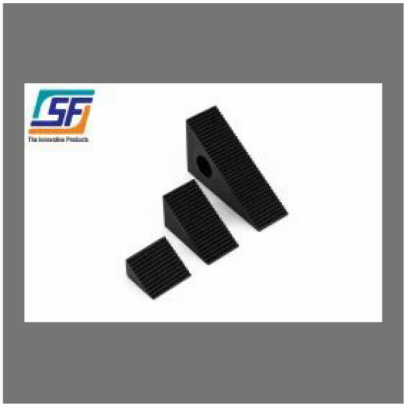


Cnc Tool Turret Sleeve

OTHER PRODUCTS:



Cnc holder degree bolt



Vmc Strep Block



Stainless Steel Drawer Kadi

Factsheet

Year of Establishment : 2014

Nature of Business : Exporter and Manufacturer

Total Number of Employees : 11 to 25 People



CONTACT US

Sujal Enterprise

Contact Person: Atul Kumar Haribhai Sangani

**Sujal Enterprise Plot No 65, Shed No 2, Patel Estate,
Nr Maldhari Fatak, Classic Ind Area,
Gondal Road, Swati Park, Rajkot – 360004, Gujarat, India**



+91 9909554845